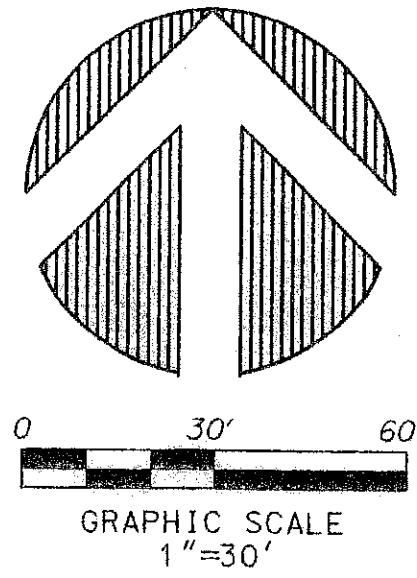


PERIMETER

SURVEYING & MAPPING
Prepared by: Jeff S. Hodapp, P.S.M.
Certificate of Authorization No. LB7264
951 Broken Sound Parkway, Suite 320
Boca Raton, Florida 33487
Tel: (561) 241-9988
Fax: (561) 241-5182

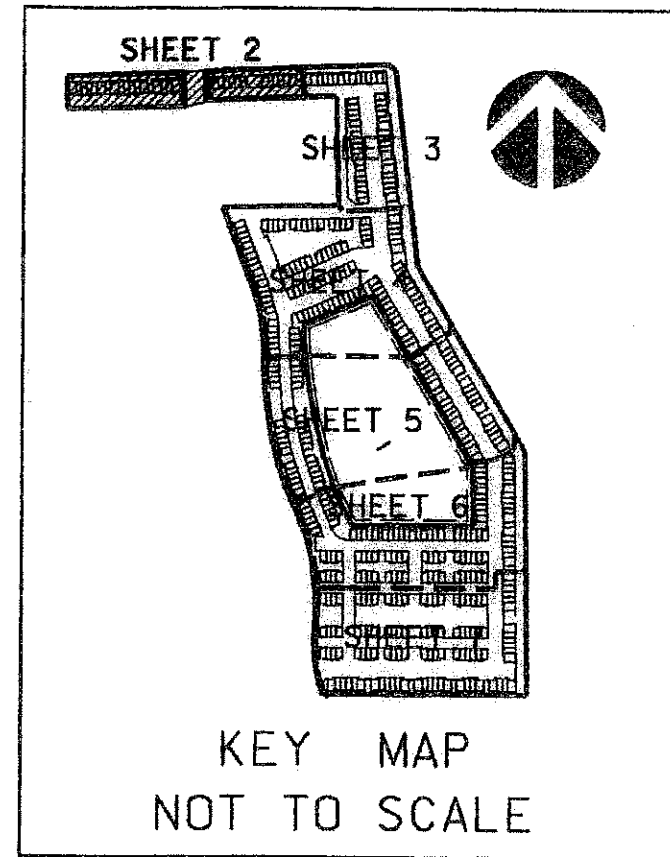


CORTINA PUD REPLAT

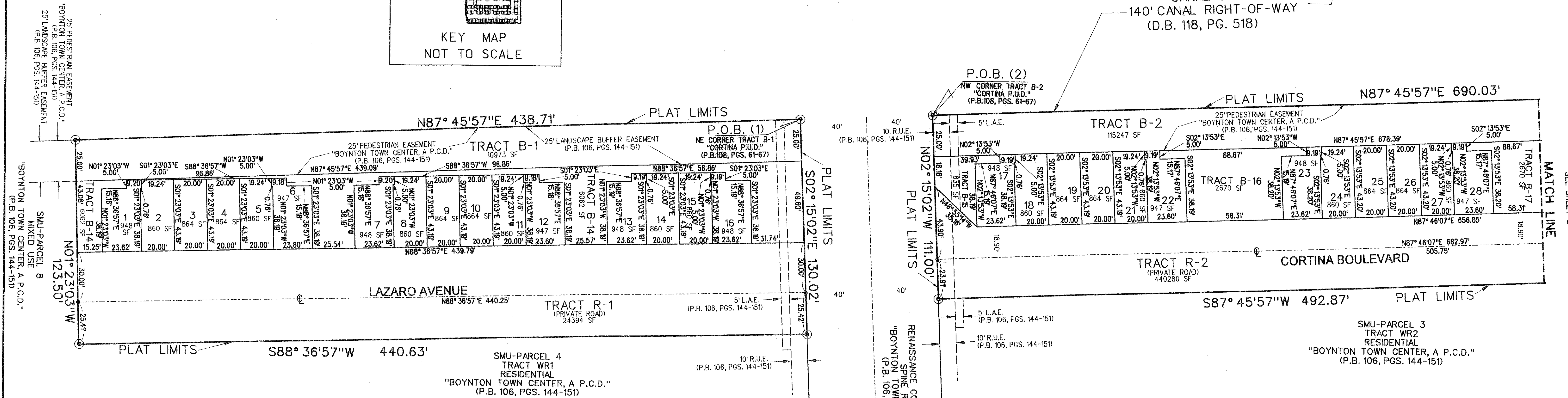
A REPLAT OF ALL OF "CORTINA PUD" (P.B. 108, PGS. 61-67, P.B.C.R.) IN SECTION 17,
TOWNSHIP 45 SOUTH, RANGE 43 EAST, CITY OF BOYNTON BEACH,
PALM BEACH COUNTY, FLORIDA. APRIL, 2007.

197

SHEET 2 OF 7



BOYNTON CANAL
CANAL C-16
140' CANAL RIGHT-OF-WAY
(D.B. 118, PG. 518)



ABBREVIATIONS :

- AC. ACRES
- CH CHORD
- CHB CHORD BEARING
- CONC. CONCRETE
- COR. CORNER
- D DELTA (CENTRAL ANGLE)
- D.E. DRAINAGE EASEMENT
- L LENGTH
- L.A.E. LIMITED ACCESS EASEMENT
- L.B. LICENSED BUSINESS
- L.B.E. LANDSCAPE BUFFER EASEMENT
- L.M.E. LAKE MAINTENANCE EASEMENT
- L.S. LICENSED SURVEYOR
- L.S.E. LAKE STATION EASEMENT
- L.W.D.D. LAKE WORTH DRAINAGE DISTRICT
- MON. MONUMENT
- O.R.B. OFFICIAL RECORDS BOOK
- N.R. NON-RADIAL
- P.B. PLAT BOOK
- P.B.C.R. PALM BEACH COUNTY RECORDS
- PG. PAGE
- P.C.P. PERMANENT CONTROL POINT
- P.O.B. POINT OF BEGINNING
- P.O.C. POINT OF COMMENCEMENT
- P.R.M. PERMANENT REFERENCE MONUMENT
- P.S.M. PROFESSIONAL SURVEYOR & MAPPER
- P.U.D. PLANNED UNIT DEVELOPMENT
- RADIUS RADIUS
- R/W RIGHT-OF-WAY
- R.U.E. ROAD AND UTILITY EASEMENT
- SEC. SECTION
- S.F. SQUARE FEET
- U.E. UTILITY EASEMENT

- LEGEND:
- ⊙ SET P.R.M. (UNLESS OTHERWISE NOTED)-4" DIAMETER CONC. MON. WITH ALUMINUM DISK STAMPED *LB7264
 - P.C.P.
 - ⊙ CENTERLINE